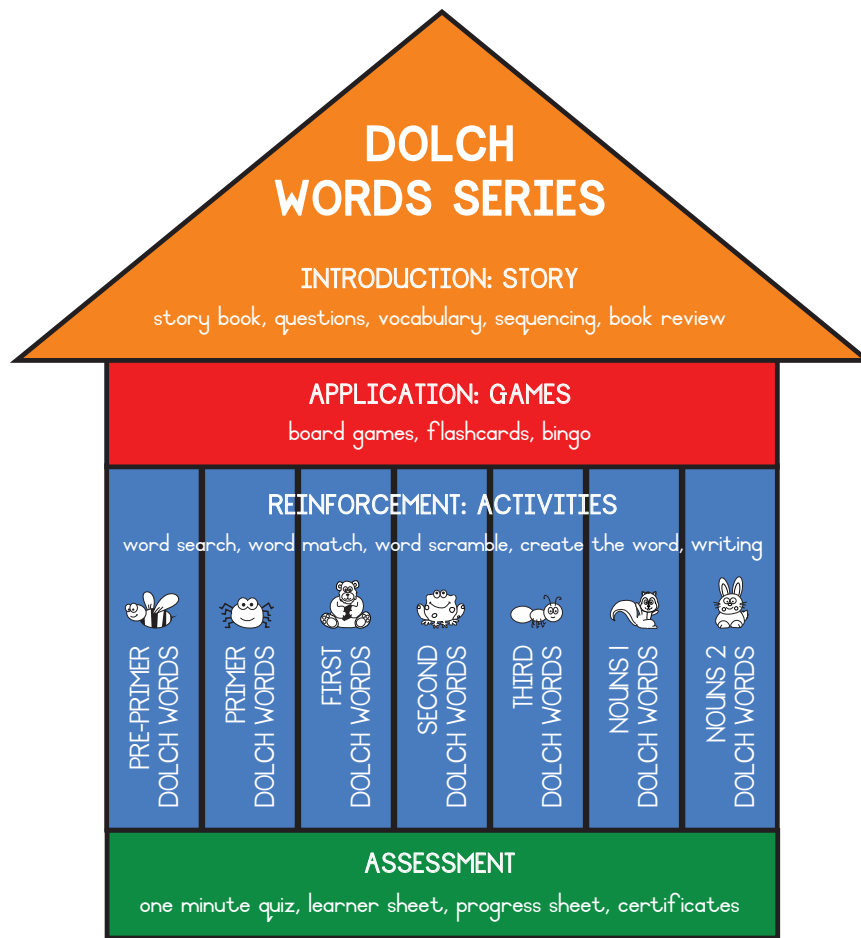


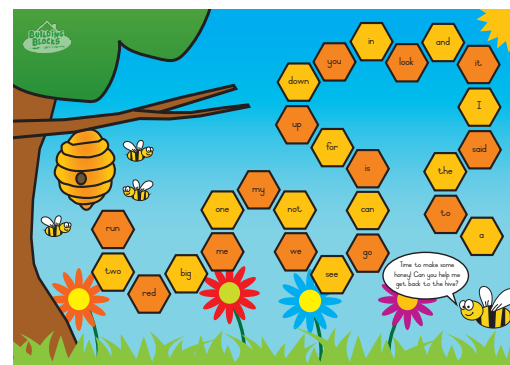
DOLCH WORD PRE-PRIMER BOARD GAMES

Building Blocks creates fun-filled educational resources
that help children gain the foundational skills needed
for their life-long learning journey.

www.buildingblockseducation.net



The Dolch words bundle contains hundreds of pages of games, assessments, activities and a story book to help learners grasp the most commonly used words in the English language.



The Dolch words games bundle includes board games, flash card games and bingo cards to help apply the words learners have been introduced to in the story book.

BOARD GAMES



What are the aims of this resource?

- To increase familiarity with Dolch words.
- To practise Dolch words in context.

What is included in the resource?

- Board games (colour with Dolch words, colour with no words, black and white with Dolch words, black and white with no words).
- Extra game board pieces (colour with Dolch words, colour with no words, black and white with Dolch words, black and white with no words).
- Game cards (an alternative to using a dice).

Who can this resource be used with?

- Individuals, small groups or whole class.

What tools and materials are required?

- Game boards (choose the appropriate Dolch word level). The game boards should be printed to A3 size.
- Counters.
- Dice or game cards provided.
- Extra game board pieces (if required).

How should the resource be used?

There are four ways in which this resource can be used:

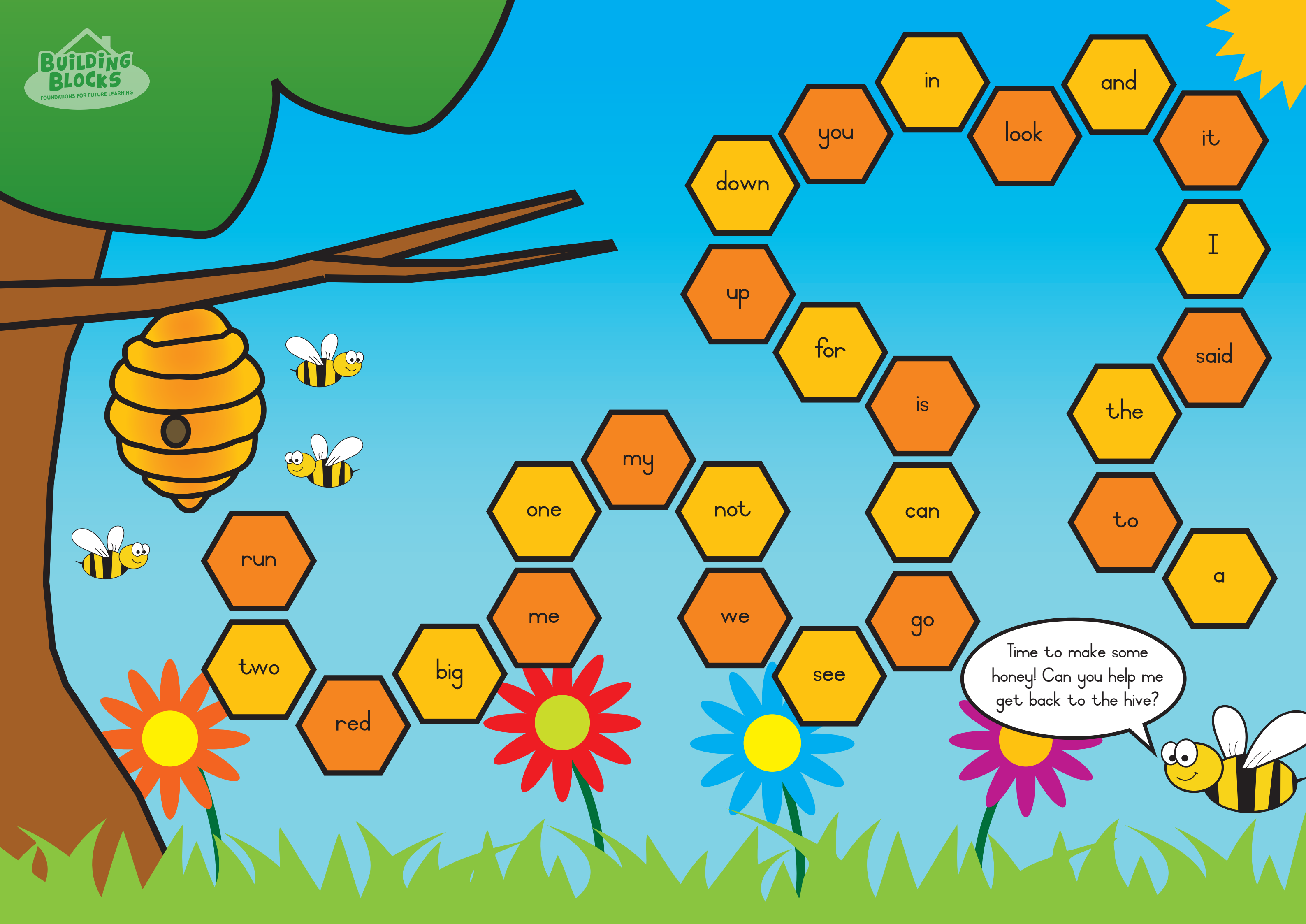
- Use the game board as is.
- Fill in your own words on the blank template.
- Use the extra game board pieces to replace words already known or words from a previous level on the game board.
- Print out a black and white version for learners to take home with them.

How should the games be played?

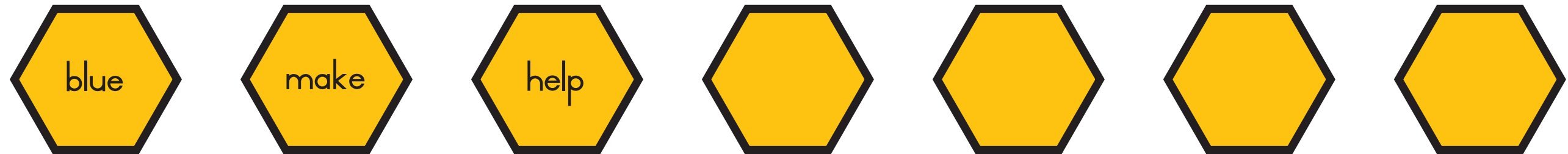
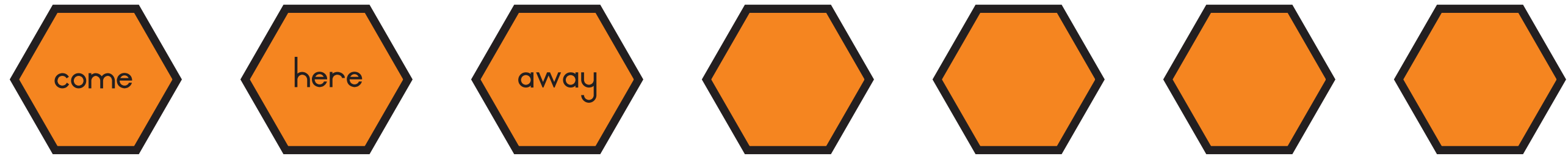
The following is an outline of how the board games are set out to be used.

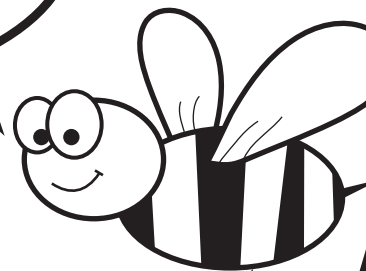
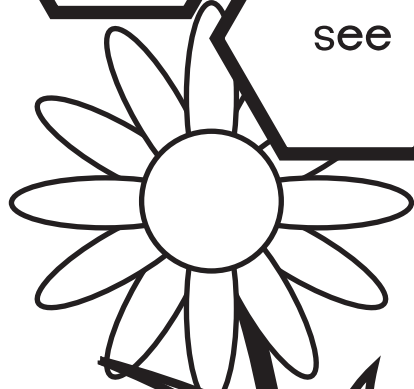
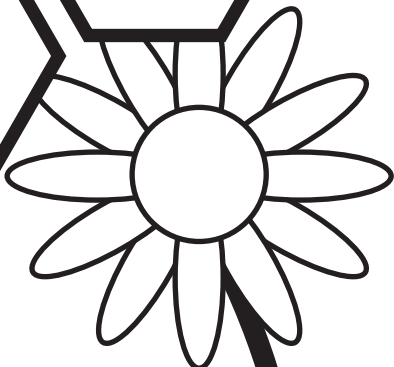
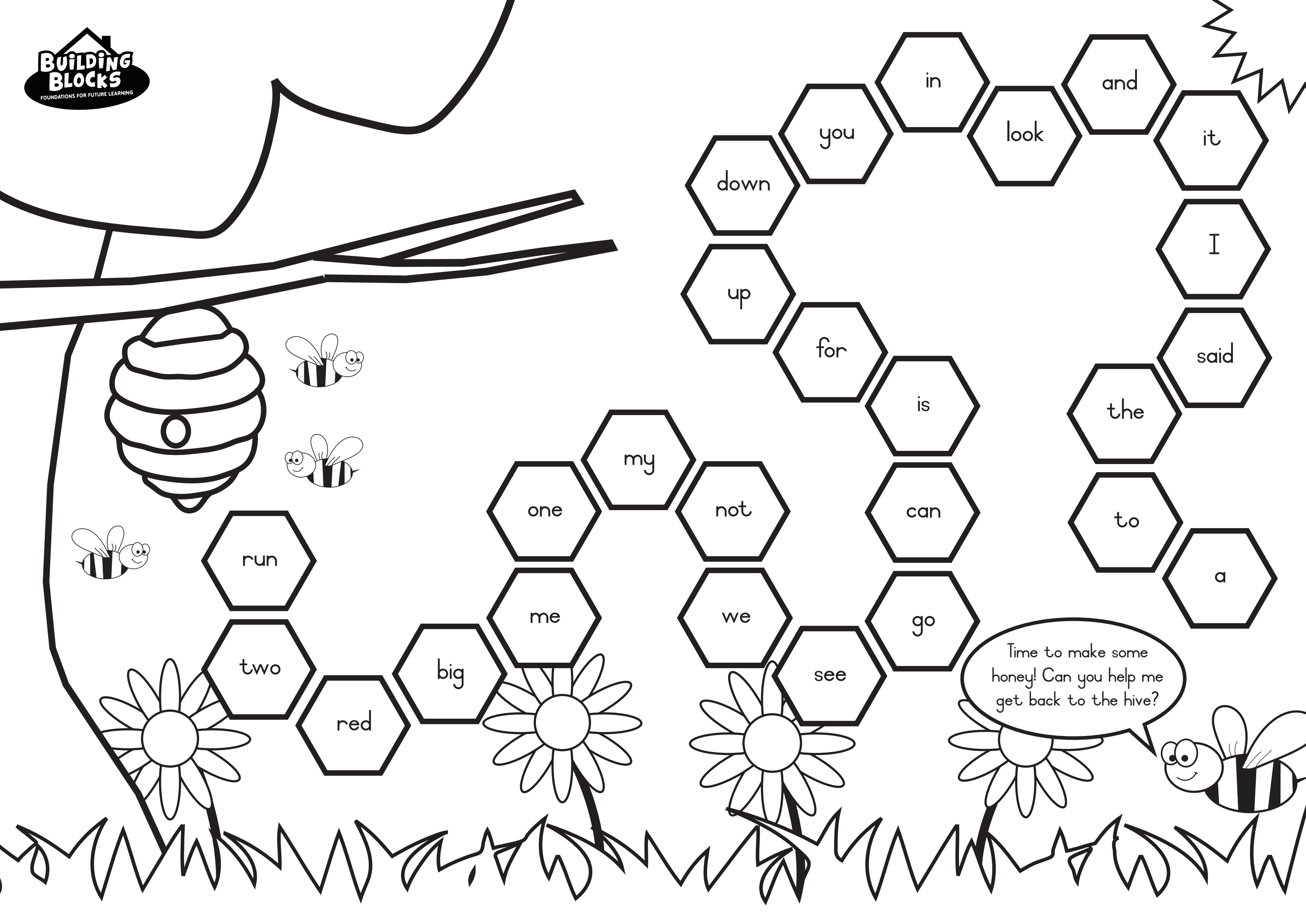
Game	Where to start	Process	Where to end
Bee	At "a" in the right bottom corner.	Follow the honeycomb path from right to left.	On the hive.
Spider	At "he" at the centre of the board.	Move from "he" in a clockwise position along the orange game board blocks. Then follow the red blocks, followed by the pink strips in a clockwise direction.	Finish at the green block "say".
Bear	At "of" at the cave.	Follow the footprints to the bear sitting under the tree.	Finish on the bear.
Frogs	At "or" on the top left hand corner of the pond.	Follow the connected path of lily pads.	Finish at the frog's two friends.
Ants	At "got" at the bottom right hand corner next to the ant.	Follow the path up the hill.	At the cake on the picnic blanket.
Squirrel	At the word "bed" next to the squirrel.	Follow the connected path of acorns.	At the hollow in the tree.
Rabbit	At the word "apple" next to the rabbit on the bottom of the page.	Follow the path of carrots to the garden at the top of the page.	At the garden.

- The learners are all to start as indicated above.
- They are to say the word they are on (all start on the same word). If they get the word correct, they throw the dice / take a game card and move the corresponding number of blocks forwards (or backwards, where applicable). If they get the word incorrect, the learner is to stay where they are and the teacher / parent assists them with the correct word. It is then the next learners turn.
- The game should be continued by taking turns until the first learner reaches the end of the game (as indicated above).
- If the learners are comfortable with this, an individual can get a bonus point (i.e. moves one extra place forward) if they can use the word in a correct sentence.



Time to make some
honey! Can you help me
get back to the hive?





Time to make some
honey! Can you help me
get back to the hive?

run

two

red

big

me

one

my

we

not

up

see

for

go

can

is

down

you

in

look

and

it

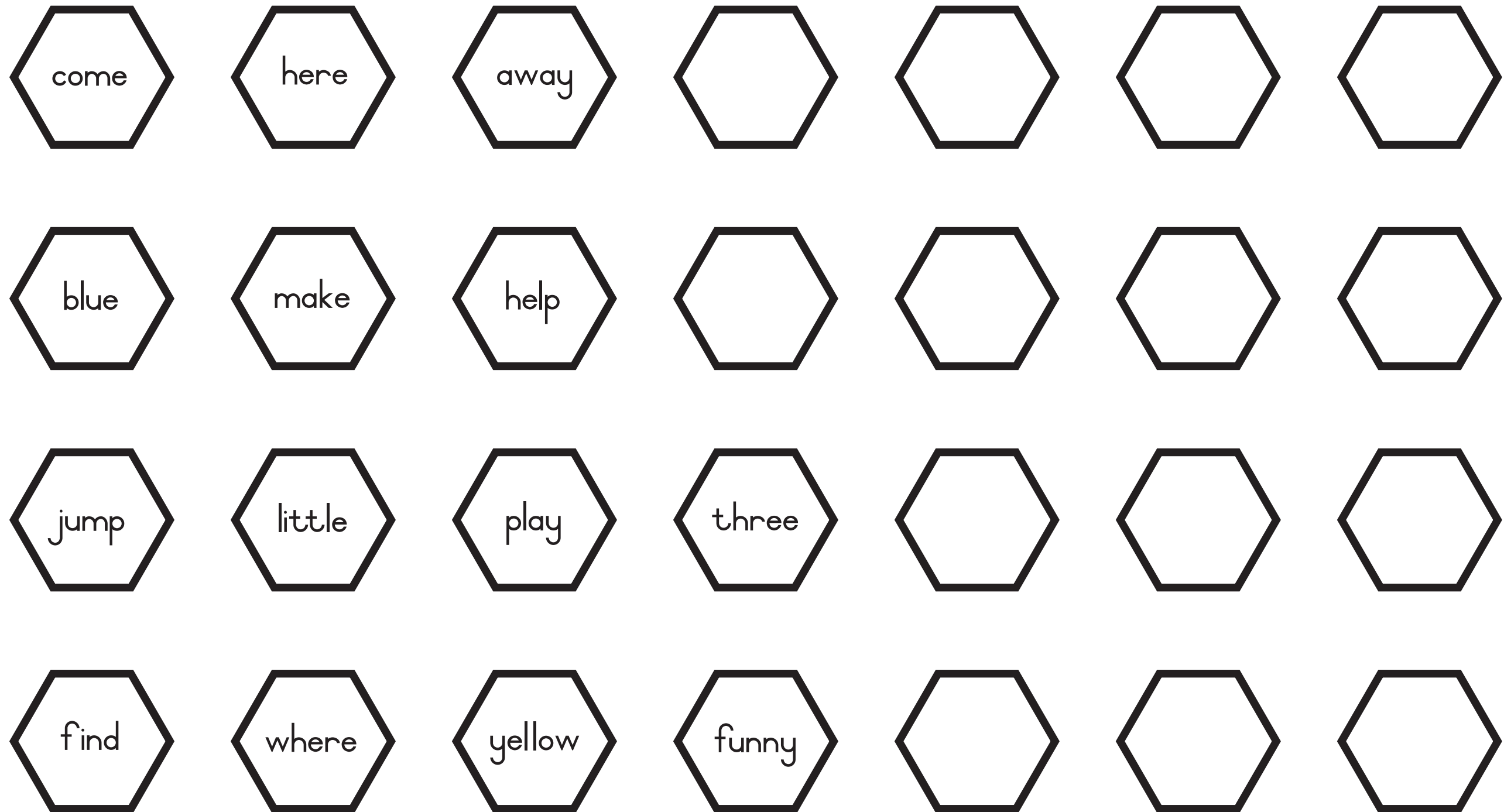
I

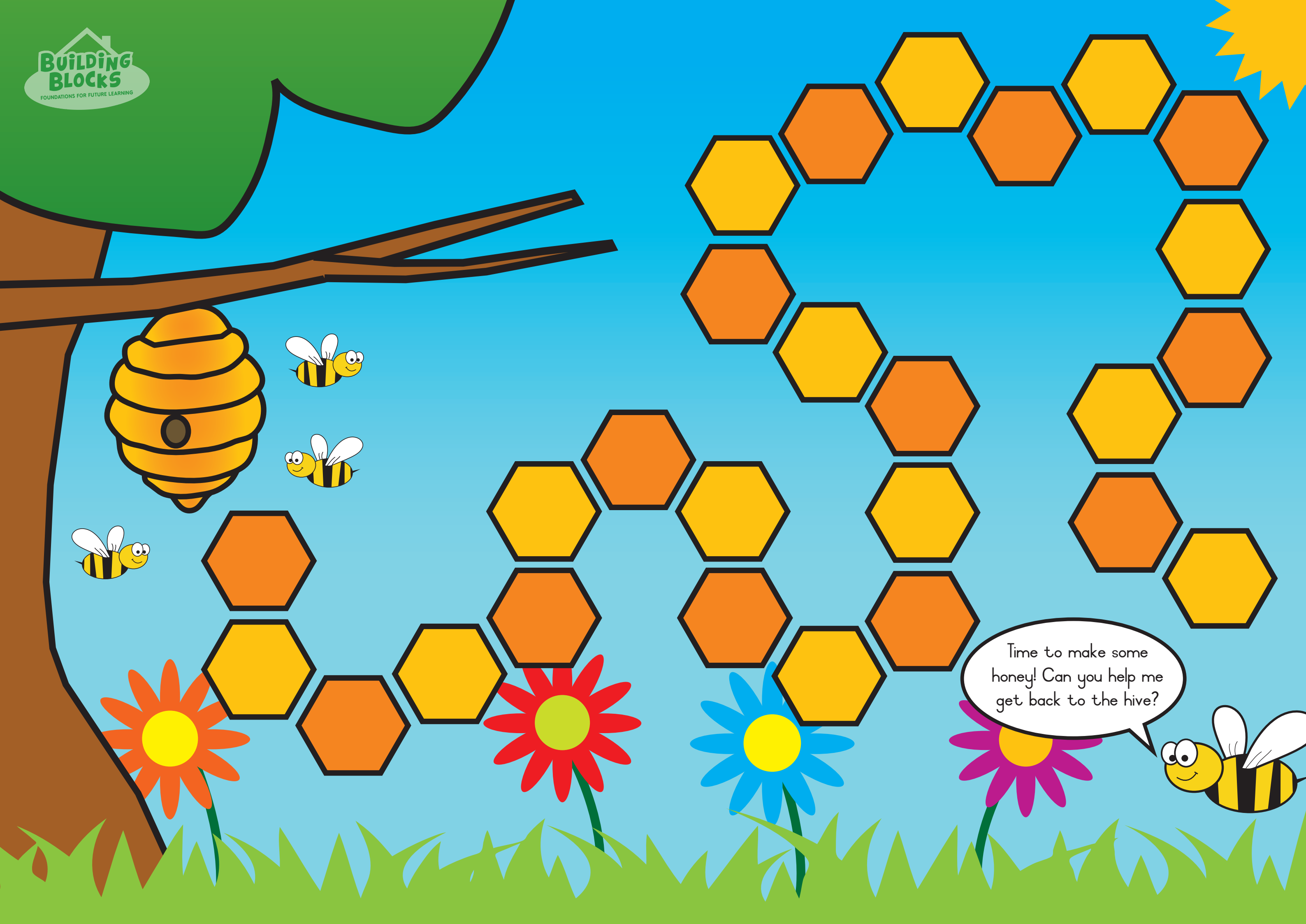
said

the

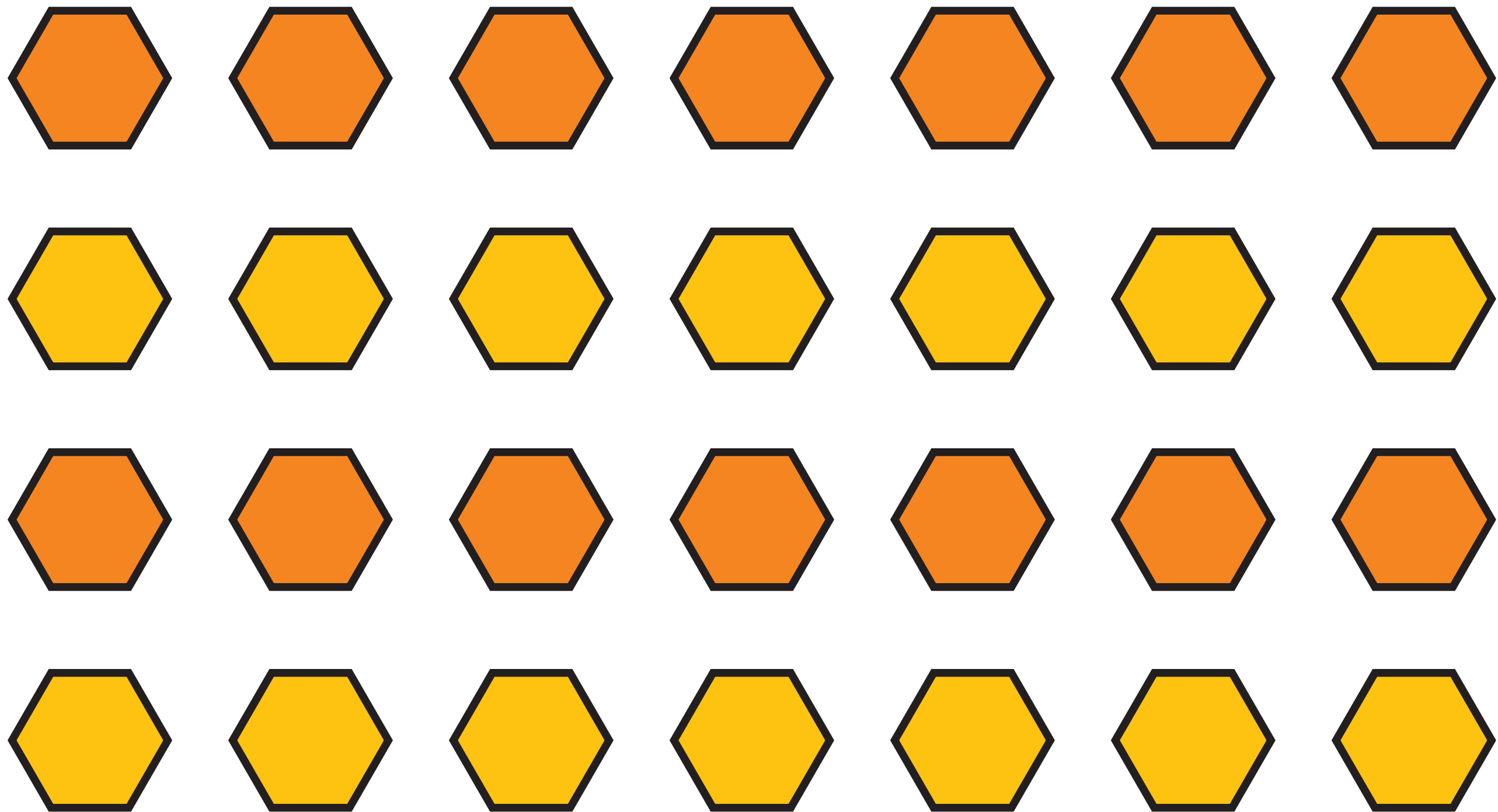
to

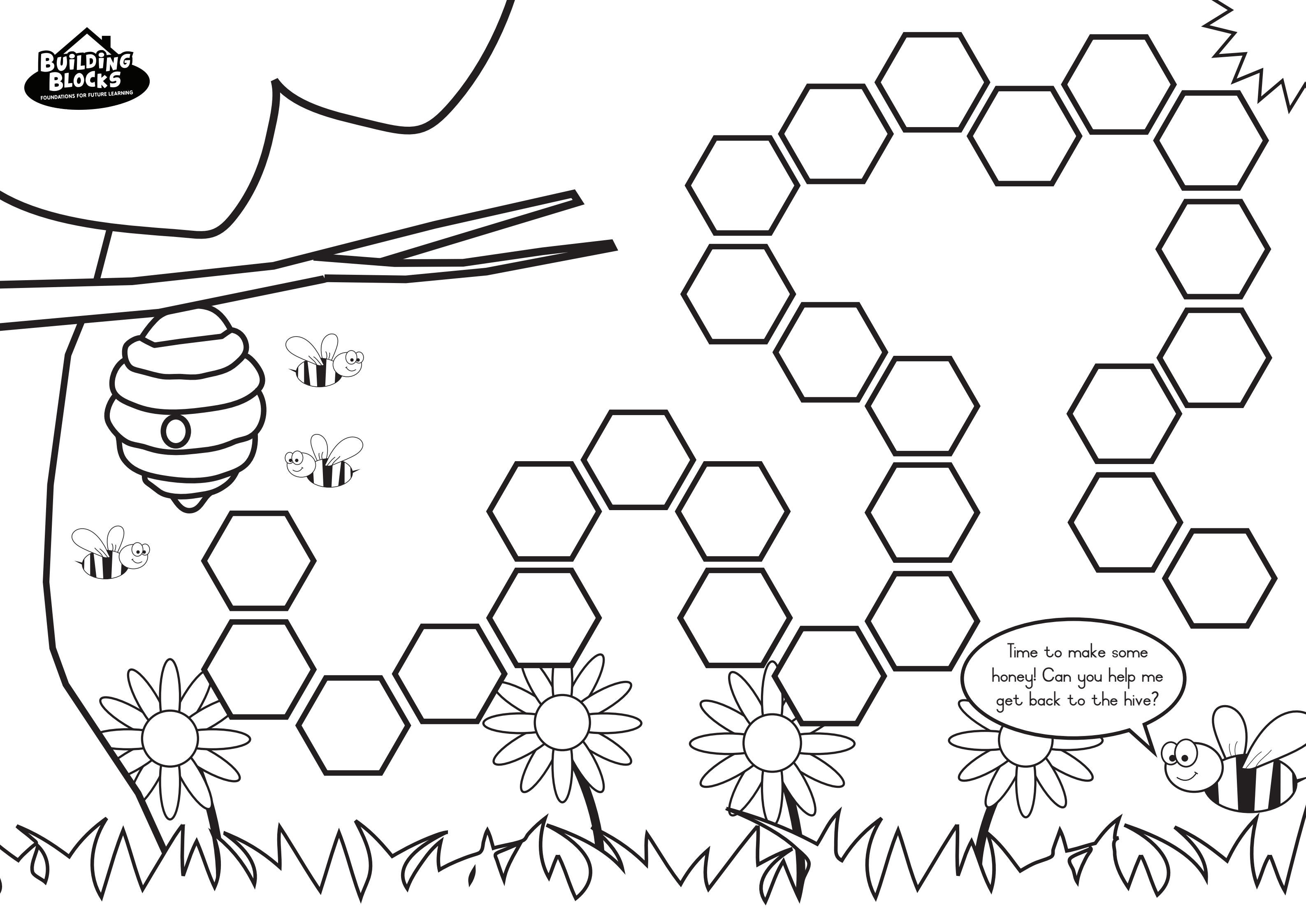
a



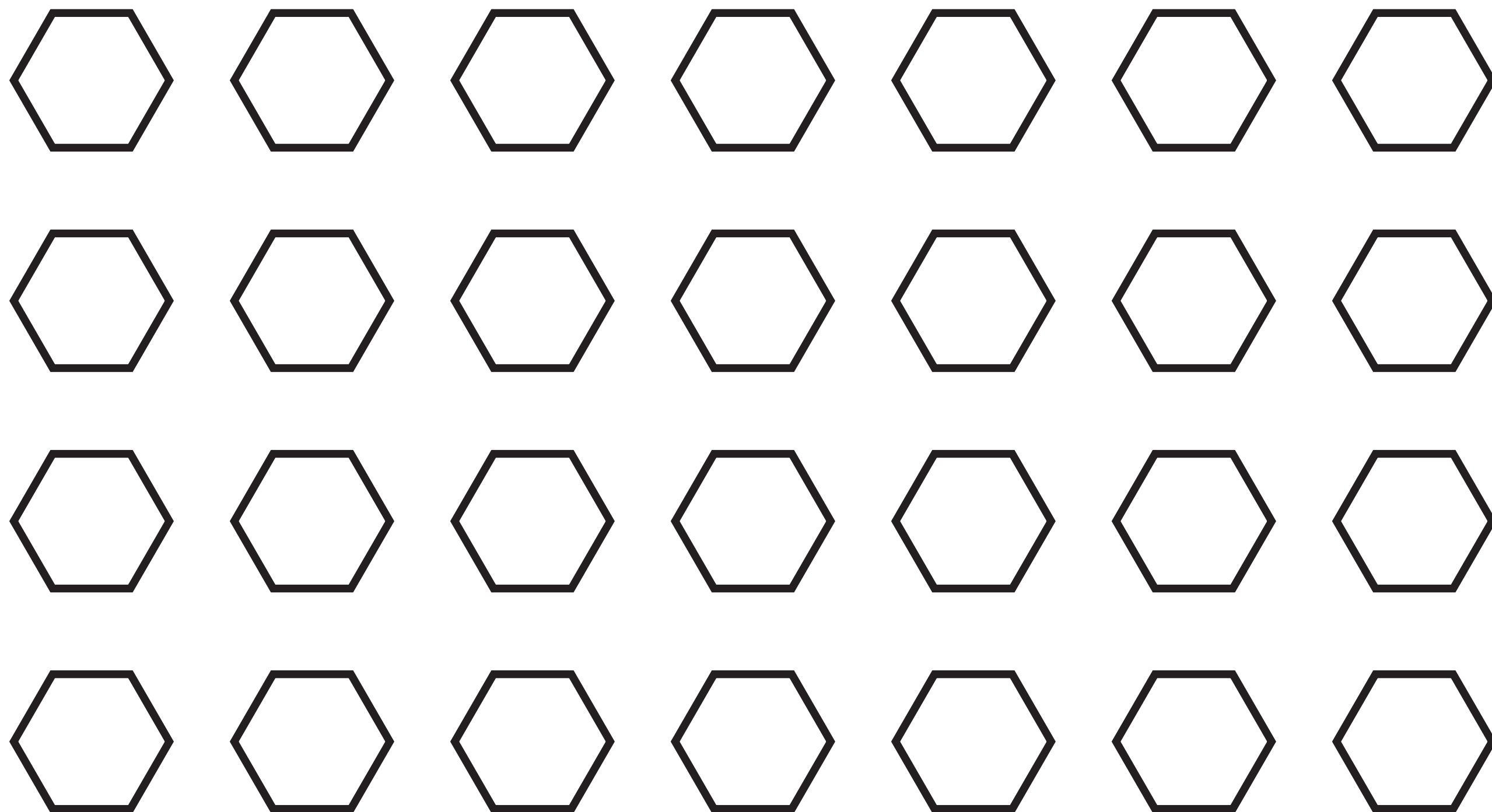


Time to make some
honey! Can you help me
get back to the hive?





Time to make some
honey! Can you help me
get back to the hive?



GAME CARDS

1	1	1	1
2	2	2	2
3	3	3	3
4	4	Move 1 forward	Move 1 forward
Move 2 forward	Move 2 forward	Move 1 backward	Move 1 backward